

Forward TS Software

# ForwardTS Software Setup



Installation & Setup Procedures

*Revision as of February 05, 2009.*

User's Guide



---

## Table of Contents

Introduction.....	4
Installation Procedure .....	5
DirectShow Filters Registration .....	6





---

## Notice

The information in this document is subject to change without prior notice in order to improve reliability, design, or function and does not represent a commitment on the part of this company.

In no event will we be liable for direct, indirect, special, incidental, or consequential damages arising out of the use or the inability to use the product or documentation, even if advised of the possibility of such damages.

Copyright © 1997 - 2009 SoftLab-NSK Ltd.  
All Rights Reserved.

No part of this reference manual may be reproduced or transmitted in any form or by any means without the prior written permission of this company.

Throughout this manual, we make reference to product names that are trademarks of other companies. We are using these names for identification purposes only, with no intention of infringement of the trademarks.

## FCC Information

### FCC ID:

This equipment has been tested and found to comply with the limits for a Class B digital device, pursuant to Part 15 of the FCC Rules. These limits are designed to provide reasonable protection against harmful interference in a residential installation. This equipment generates uses and can radiate radio frequency energy and, if not installed and used in accordance with the instructions, may cause harmful interference to radio communications. However, there is no guarantee that interference will not occur in a particular installation. If this equipment does cause harmful interference to radio or television reception, which can be determined by turning the equipment off and on, the user is encouraged to try to correct the interference by one or more of the following measures:

Reorient or relocate the receiving antenna.

Increase the separation between the equipment and receiver.

Connect the equipment into an outlet on a circuit different from that to which the receiver is connected.

Consult the dealer or an experienced radio/TV technician for help.

Shielded cables and I/O cards must be used for this equipment to comply with the relevant FCC regulations. Changes or modifications not expressly approved in writing by SoftLab-NSK Ltd. may void the user's authority to operate this equipment.

## Limited Warranty

Our company warrants this product against defects in materials and workmanship for a period of one year from the date of purchase. During the warranty period, products determined by us to be defective in form or function will be repaired or replaced at our option, at no charge. This warranty does not apply if the product has been damaged by accident, abuse, misuse, or as a result of service or modification other than by us.

This warranty is in lieu of any other warranty expressed or implied. In no event shall we be held liable for incidental or consequential damages, such as lost revenue or lost business opportunities arising from the purchase of this product.

---



---

## Introduction

Products of the Forward TS product line are designed to provide TV streaming via IP and ASI interfaces. Using the products, it is possible to build solutions of different complexity and configurations: one computer or a distributed system including several servers.

The products are software or hardware-software systems based on the ForwardTS software and FD300 or FD401 boards.

This User's Guide covers ForwardTS software installation and configuration procedures.

In addition, it is recommended that you look through the following user's guides:

- «ForwardTS Product Line» – general description of the products, information about the hardware and software, algorithm for choosing a product;
- «SLStreamer Lite, SLStreamer Pro. Programs for Configuring, Monitoring&Managing Digital Broadcasting Schemes».



## Installation Procedure

Usually, the system is supplied ready for use. When the boards are installed in the computer, the software is installed in the following order:

1. Perform the boards registration. To do so, launch the registration file.
2. Install ForwardT Software and, if available, the latest version of the ForwardT Software update.
3. Plug the HASP HL dongle (for the purchased product from the Forward TS product line) into the computer USB port. The dongle comes with the purchased product.

✓ **Important:** The dongle must remain connected to the computer all the time when installing and using the Software!

4. Install the ForwardTS software.  
To do so, launch the file `ForwardTS_Setup_XX_XX_XX.exe` (where XX denotes the software version number) and follow the instructions given by the installation program.
5. If the purchased product contains an FD300 or FD401 board (with or without additional options), perform registration of the corresponding DirectShow filters (see the next Section), which is necessary to build solutions performing data input/output in ASI format or uncompressed (analog, SDI).

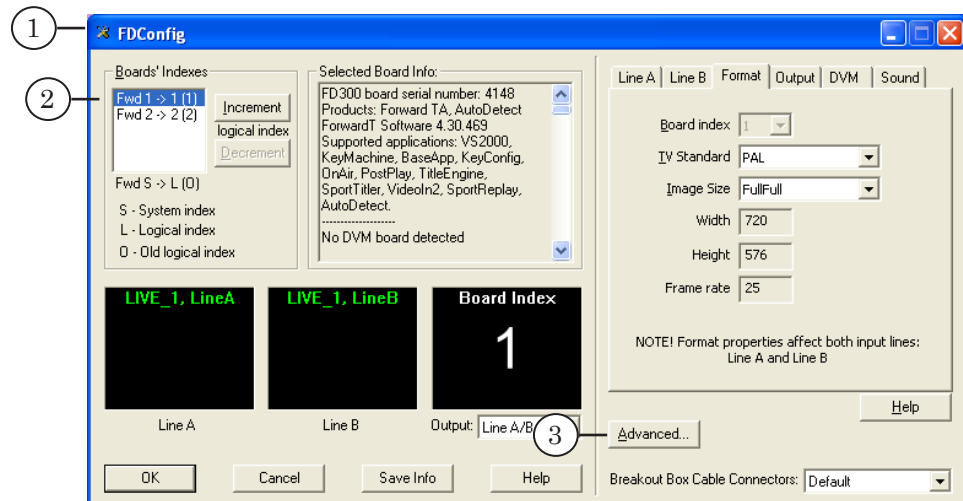


## DirectShow Filters Registration

The DirectShow filters registration is required if you build a solution using hardware options (FD300/FD401 boards) to input/output data in a compressed (ASI) or uncompressed (analog, SDI) format.

To register DirectShow filters, perform the following steps:

1. Launch the FDConfig application using the desktop shortcut or the Start menu: Programs > ForwardT Software > Board Setup > FD300 Configuration.
2. Under Boards' Indexes, select the board for which it is required to register the DirectShow filters. Further settings are performed for the selected board.
3. Click Advanced....

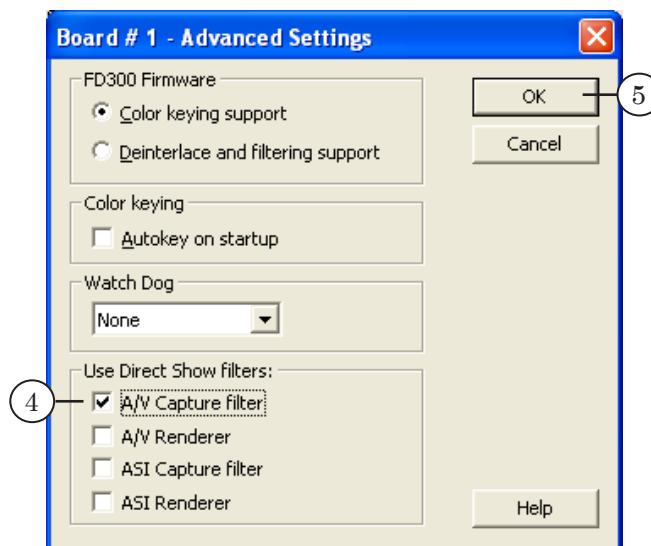




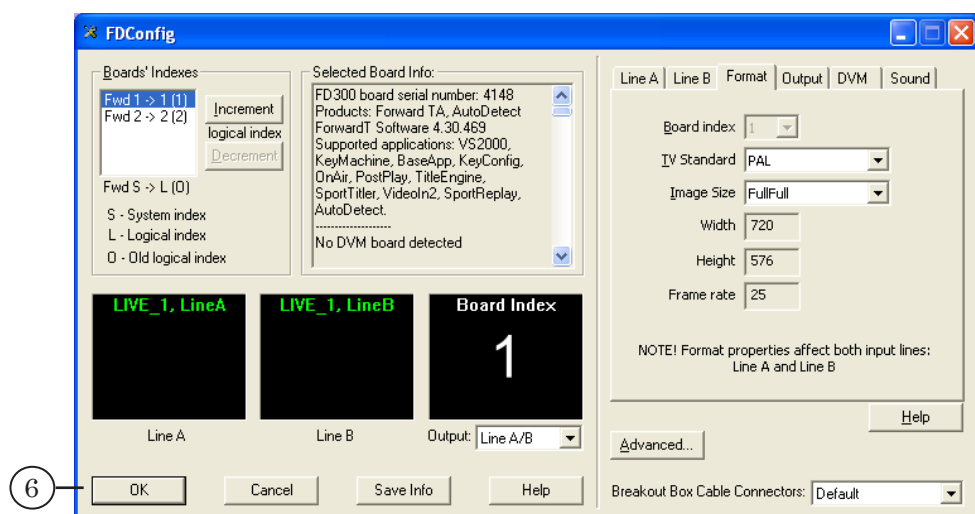
- The Board #... window opens. Under Use Direct Show filters, check the required filters (see Table below).

Name	Option	Function
A/V Capture filter	Analog-In/Out SDI-In/Out	Capturing uncompressed video and audio from the FD300 board input or output to a digital stream.
A/V Renderer	Analog-In/Out SDI-In/Out	Playing video and audio on the FD300 board output.
ASI Capture filter	ASI-In/Out	Capturing MPTS digital data from the ASI input of the FD401 board.
ASI Renderer	ASI-In/Out	Streaming MPTS data to the ASI output of the FD401 board.

- Click OK.



- To save the settings and exit FDConfiguration, click OK in the main window.





---

## Useful Links

### **ForwardT Product Line: Description, Software Delivery, Documentation, Ready Solutions**

<http://www.softlab-nsk.com/forward/index.html>

### **Tech Support**

<http://www.softlab-nsk.com/support.html>

e-mail: [forward@softlab.tv](mailto:forward@softlab.tv)

[forward@sl.iae.nsk.su](mailto:forward@sl.iae.nsk.su)

[forward@softlab-nsk.com](mailto:forward@softlab-nsk.com)

### **Forums**

<http://www.softlab-nsk.com/forum> (currently available in Russian only)