

FDO nAir: Function of Mirroring, Remote Control



Configuration of Network Connection
Between Machines

*Revision as of:
May 25, 2010*

User's Guide



Notice

The information in this document is subject to change without prior notice in order to improve reliability, design, or function and does not represent a commitment on the part of this company.

In no event will we be liable for direct, indirect, special, incidental, or consequential damages arising out of the use or the inability to use the product or documentation, even if advised of the possibility of such damages.

Copyright © 1997 - 2012 SoftLab-NSK Ltd.
All Rights Reserved.

No part of this reference manual may be reproduced or transmitted in any form or by any means without the prior written permission of this company.

Throughout this manual, we make reference to product names that are trademarks of other companies. We are using these names for identification purposes only, with no intention of infringement of the trademarks.

FCC Information

FCC ID:

This equipment has been tested and found to comply with the limits for a Class B digital device, pursuant to Part 15 of the FCC Rules. These limits are designed to provide reasonable protection against harmful interference in a residential installation. This equipment generates uses and can radiate radio frequency energy and, if not installed and used in accordance with the instructions, may cause harmful interference to radio communications. However, there is no guarantee that interference will not occur in a particular installation. If this equipment does cause harmful interference to radio or television reception, which can be determined by turning the equipment off and on, the user is encouraged to try to correct the interference by one or more of the following measures:

Reorient or relocate the receiving antenna.

Increase the separation between the equipment and receiver.

Connect the equipment into an outlet on a circuit different from that to which the receiver is connected.

Consult the dealer or an experienced radio/TV technician for help.

Shielded cables and I/O cards must be used for this equipment to comply with the relevant FCC regulations. Changes or modifications not expressly approved in writing by SoftLab-NSK Ltd. may void the user's authority to operate this equipment.

Limited Warranty

Our company warrants this product against defects in materials and workmanship for a period of one year from the date of purchase. During the warranty period, products determined by us to be defective in form or function will be repaired or replaced at our option, at no charge. This warranty does not apply if the product has been damaged by accident, abuse, misuse, or as a result of service or modification other than by us.

This warranty is in lieu of any other warranty expressed or implied. In no event shall we be held liable for incidental or consequential damages, such as lost revenue or lost business opportunities arising from the purchase of this product.



Table of Content

Introduction.....	4
Configuration of Network Connection Between Machines	5
1. General Workflow	5
2. Logging-In	5
3. Configuration of Firewall	6
4. Configuration of FDO nAir for Message Exchange	8
Additional Information	12
Modifying of Port Number for the SLMessageServer2 Service	12





Introduction

To use in FDO on Air a function of mirroring or function of remote control (RemoteOnAir) you need to customize network connection between used machines.

The present document provides with instruction on configuration of network connection.



Configuration of Network Connection Between Machines

1. General Workflow

Working in mirroring mode or having a remote control over FDO nAir require at least 2 machines. Complete the following steps to configure each of the machines for further dealing:

1. Log in using accounts that satisfy specified requirements.
2. Customize firewall.
3. Configure function of messages exchange in FDO nAir. If you customize remote control you should implement this only on controllable machine.

Detailed information on each step is given below in corresponding sections.

2. Logging-In

1. Be sure that the following requirements are preliminary met:
 1. Machines are in one local network group.
 2. There is at least one user account that in pair with the second one on another machine meet the following requirements:
 - both accounts are created for the same user (the same user name is specified);
 - both accounts have the same configuration:
 - presence of administrative rights;
 - request of a password when entering the system.
2. Log in on each used machine under name that meets item 1.

➡ **Example:** User names on both machines can be different. Let there are several created accounts with administrative rights and password protection on 2 machines:

- machine №1 – User1, User2, User3;
- machine №2 – User1, User3, User5, User7.

In this case logging in on each machine must be implemented under the User1 or User3 names for further working.

It is not obligatory to have identical user names on both machines, for example, on the first machine it can be User1, on the second – User3.

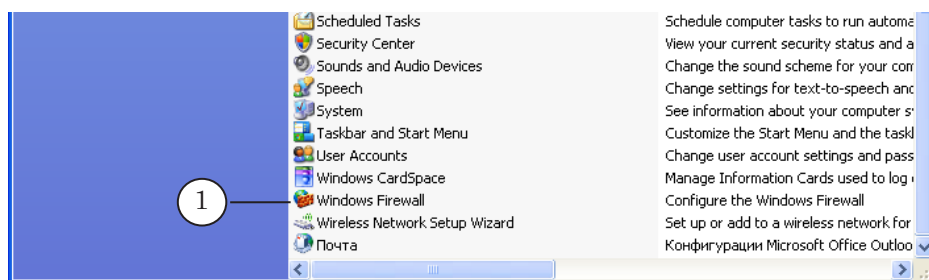


3. Configuration of Firewall

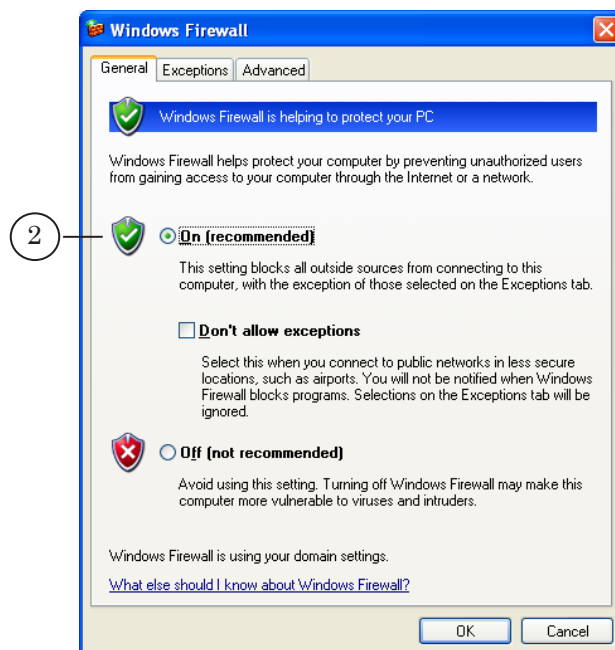
For remote control and mirroring configure Firewall (switch it off/customize exceptions for the SLMessageServer2 service).

Complete the following on each machine if Firewall is on:

1. Open Control panel via Start: Settings > Control Panel.
2. Double-click Windows Firewall (1).

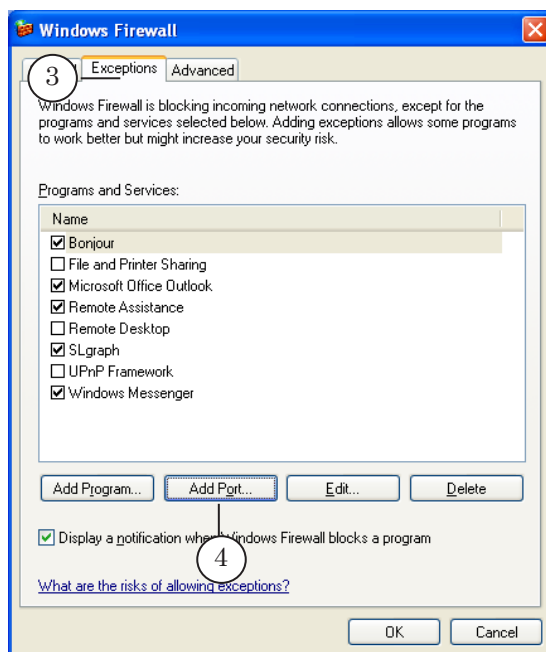


3. Be sure that On (2) is selected in the appeared window on the General tab.
The following steps should be implemented in this window.

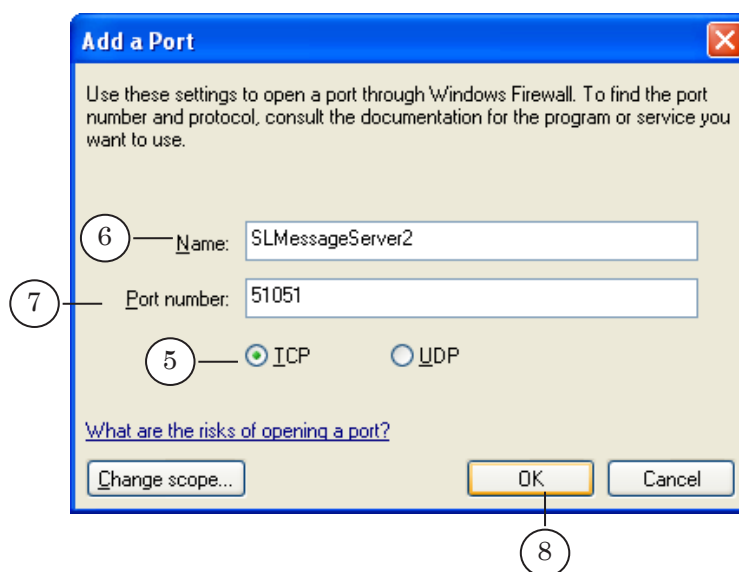




4. Pass to the Exceptions tab (3) and click the Add port... button (4).

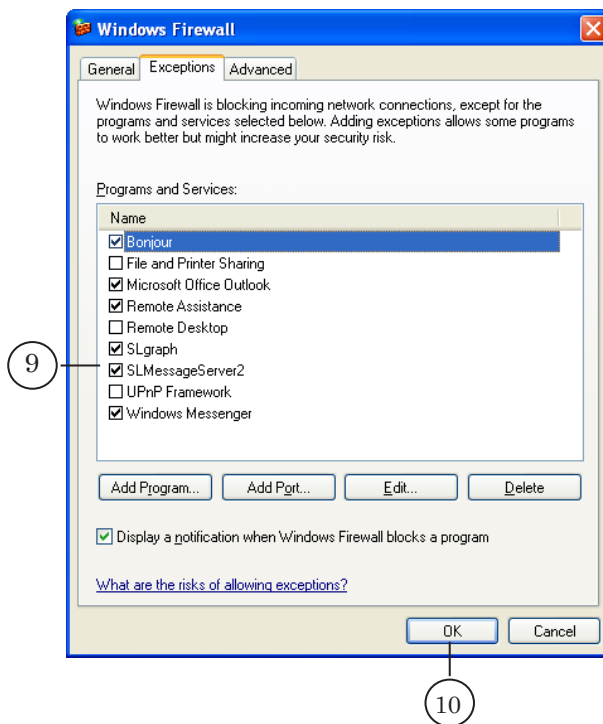


5. In the Add a Port window:
 1. Be sure that TCP (5) is selected.
 2. Specify name of a service in the Name field (6): SLMessageServer2.
 3. Specify SLMessageServer2 port number in the Port number field (7). Port 51051 is used by default.
 4. Click OK (8) to apply the settings and close the window.





- Specified service is added to the Programs and Services list (9).



- Click OK (10) to save the settings and close the window.

4. Configuration of FDO nAir for Message Exchange

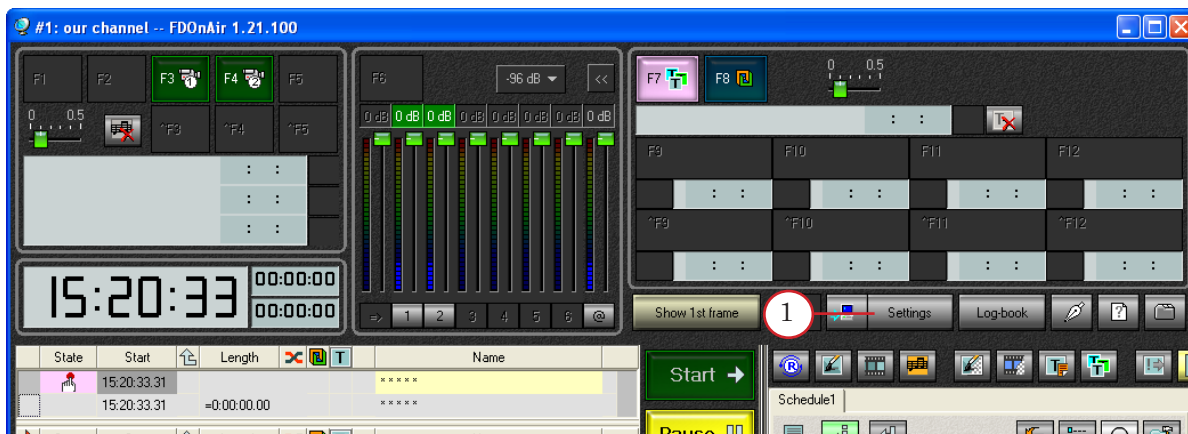
Complete the following steps for each of the used FDO nAir application instances:

- Launch necessary FDO nAir application instance via shortcut or the Start menu command:
Programs > ForwardT Software > OnAir.

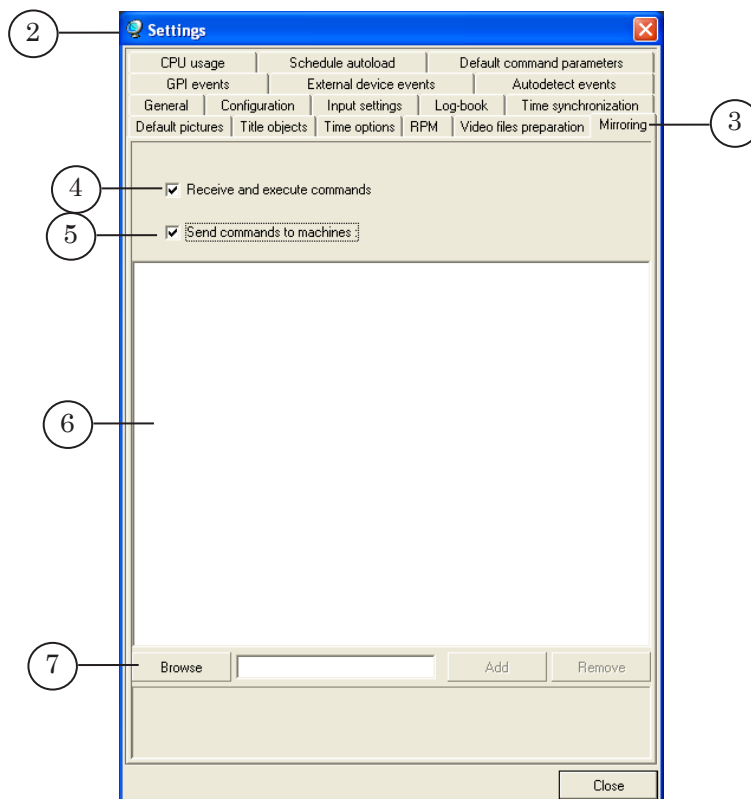
Important Remember that FDO nAir application instances launched on both machines have the same numbers to implement mirroring.



2. Click Settings (1) in the main application window.

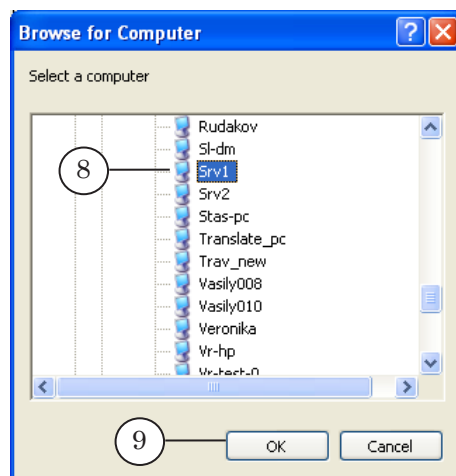


3. Pass to the Mirroring tab (3) in the Settings window (2).
4. Put the Receive and execute commands check mark (4).
5. Put the Send commands to machines check mark (5) to allow this program instance sending commands to other program instances launched on machines listed below (6).
6. Click Browse (7) to add machine to the list (6).

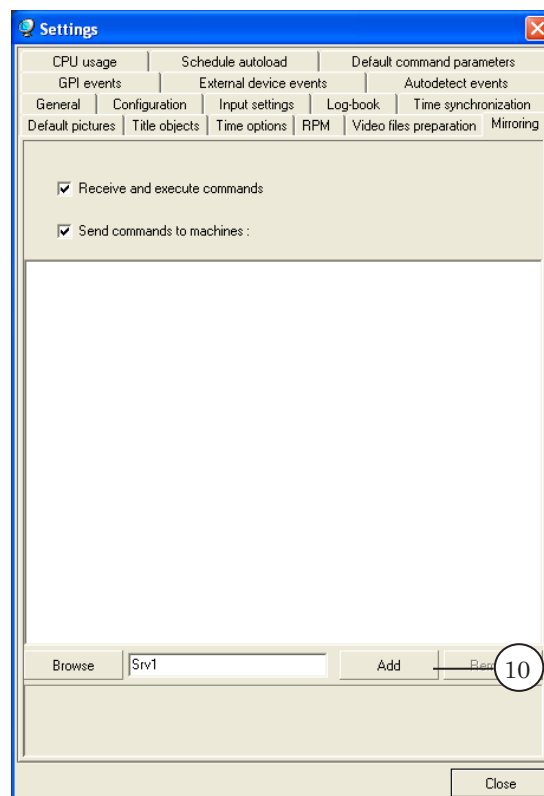




- Specify necessary machine in the Browse for Computer window (8) and click OK (9).

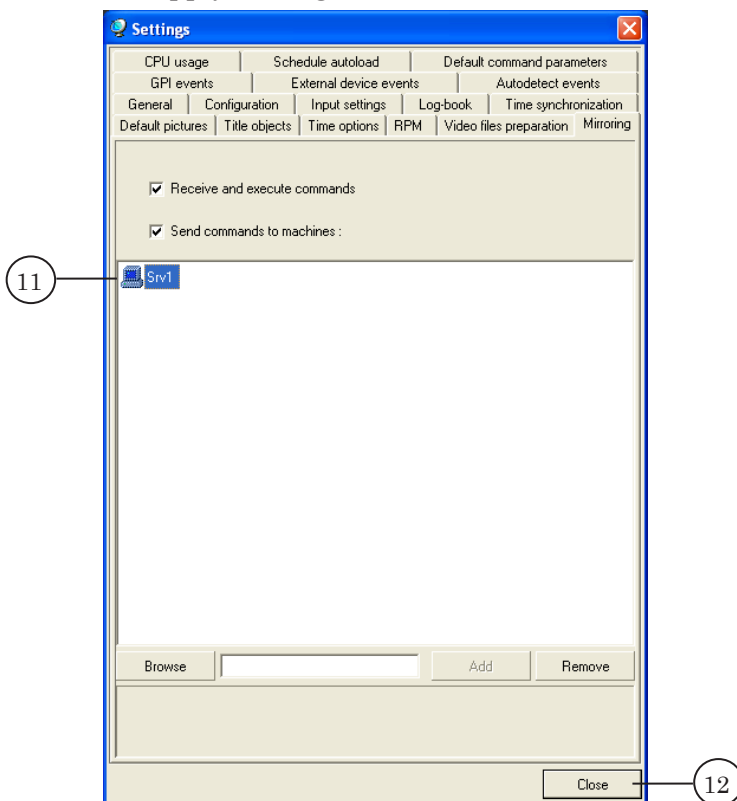


- Then click Add (10).

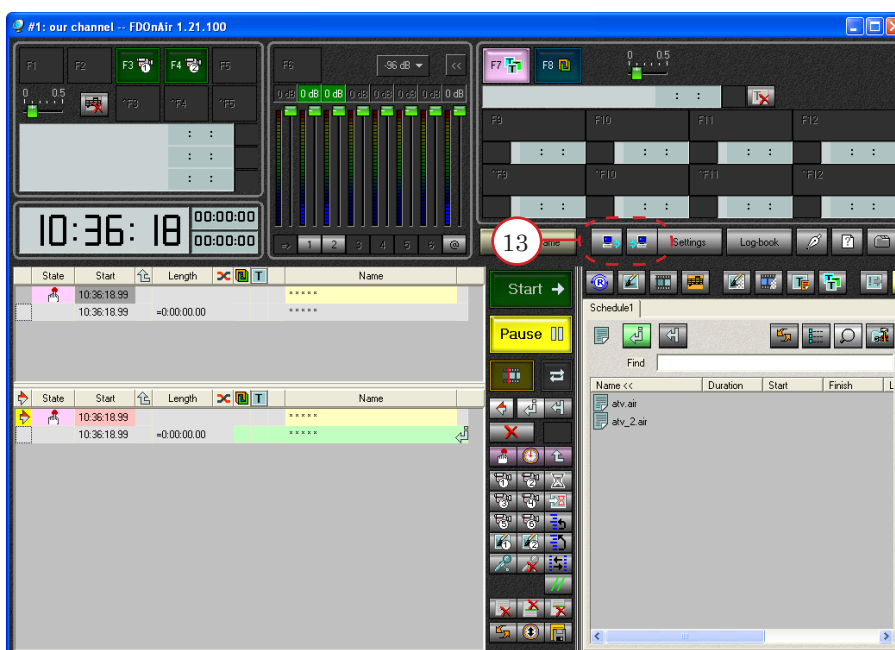




9. Machine name is added to the list (11). Click Close (12) to apply settings and to close the window.



10. Two buttons are activated in the FDOAir main application window (13). One button enables/disables FDOAir instance to receive and execute external commands. The second button enables/disables FDOAir instance to send commands to another applications (including other FDOAir instances).



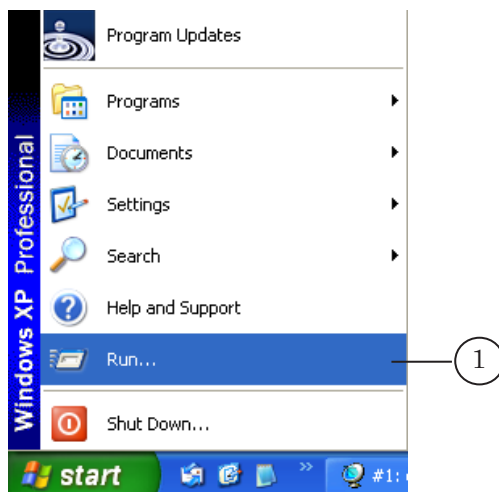


Additional Information

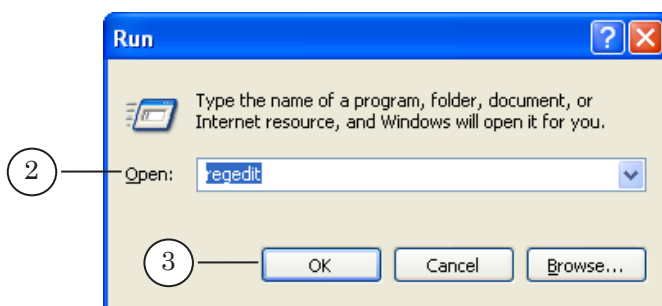
Modifying of Port Number for the SLMessageServer2 Service

There is a possibility of modifying default port number. For this you should use the regedit.exe utility (Windows registry editor).

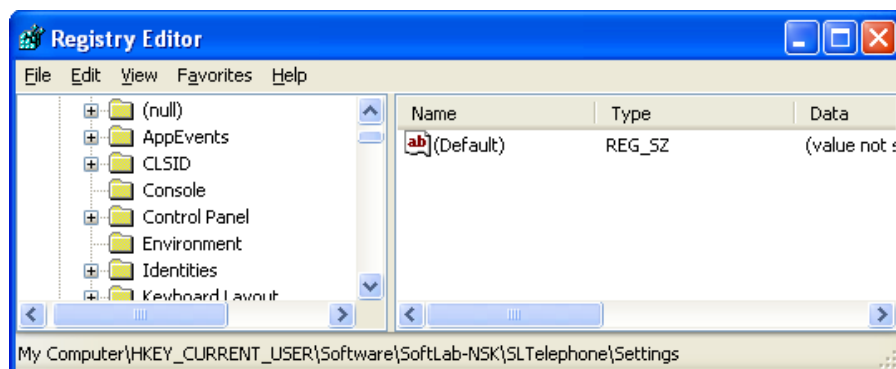
1. Click Start, then Run... (1).



2. Specify regedit in the appeared window in the Open field (2). Then click OK (3).

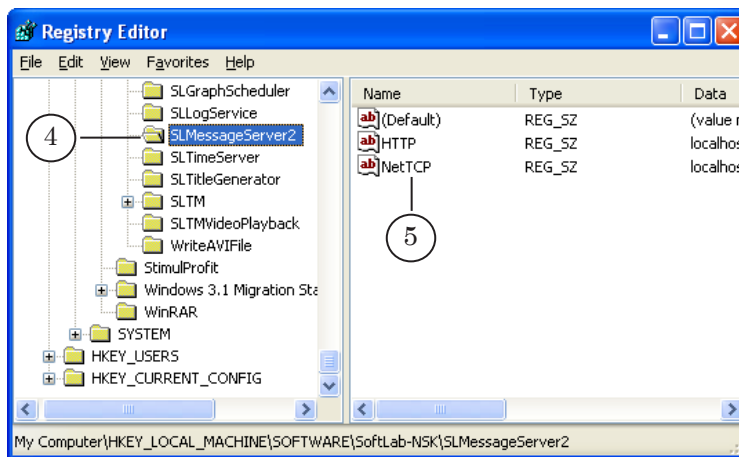


3. Regedit.exe is launched and the Registry Editor window appears.

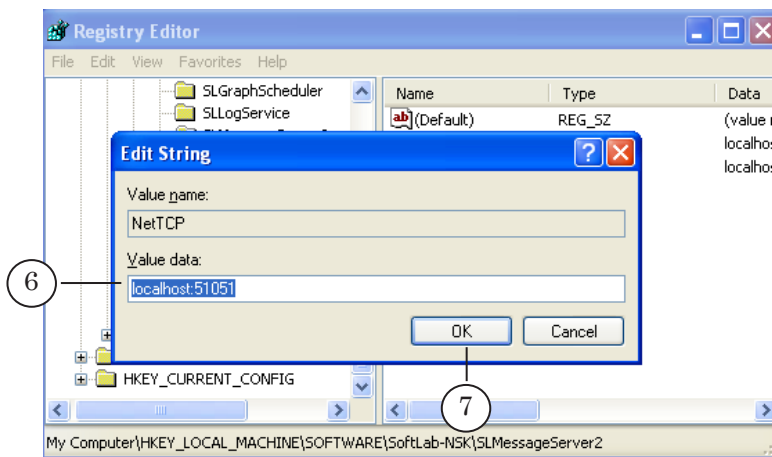




4. In the appeared window:
 1. Pass to the HKEY_LOCAL_MACHINE > SOFTWARE > Softlab-NSK > SLMessageServer2 section (4).
 2. Double-click parameter that you want to modify: HTTP or NetTCP (5).



5. Specify new value data in the appeared window (6). Then click OK (7).



6. Close registry editor window. Made modifyings will be saved after clicking OK.
7. Do not forget to adjust Firewall exceptions after modifying port number.



Useful Links

Forward T Product Line: Description, Software Delivery, Documentation, Ready Solutions

<http://www.softlab-nsk.com/forward/index.html>

Support

<http://www.softlab-nsk.com/forward/support.html>

e-mail: forward@sl.iae.nsk.su

forward@softlab-nsk.com

forward@softlab.tv

Forum

<http://www.softlab-nsk.com/forum> (currently available in Russian only)

Translation from
13 April, 2012

© SoftLab-NSK
